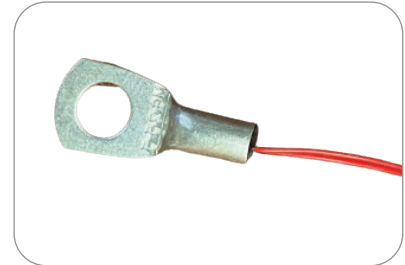


RTS Series

Ring Terminal Temperature Sensor



RTS Series of Ring Terminal Temperature Sensors consist of an NTC chip thermistor mounted in an eyelet tag for surface temperature measurement.

Features

- Sensing element electrically isolated from eyelet
- Eyelet configurations to fit M3, M3.5, M4, M5, M6 screw sizes
- Range of wire lengths available from 50 mm to 2,000 mm
- Epoxy coated NTC thermistor chip
- Ring Terminal material tin plated copper
- Lead wire 28AWG XLPE insulated tin plated copper
- RoHS, Reach, Prop65 Compliant

Applications

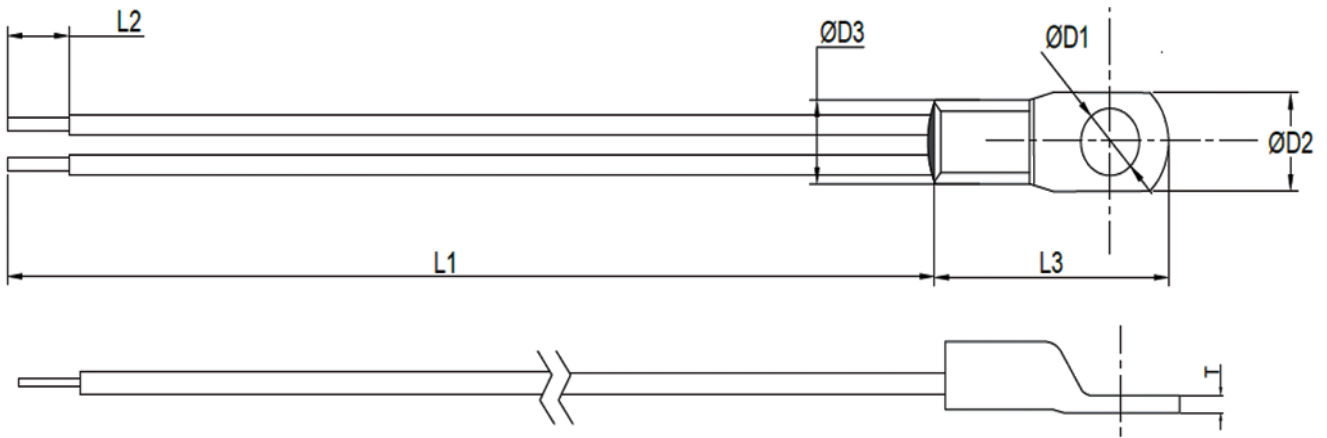
- EV/HEV Bus Bars
- Battery Covers
- Thermal Management
- Heat Sinks
- Panel Enclosures

Type RTS Specifications	Value	Units
Operating Temperature	-40 to 125	°C
Storage Temperature	-40 to 85	°C
Resistance at 25°C	5k to 100k	Ω
Resistance tolerance	±1, ±2, ±5	%
Beta _{25/85}	3977 or 4252	K
Dissipation constant	1.5	mW/K
Time response	7	Sec.
Dielectric withstand between wires and eyelet	1,000	VDC

RTS Series Ring Terminal Temperature Sensors

Dimensions

Mechanical Dimensions (mm)							
	D1	L1	L2	D3	T	L3	D2
M3	3.2	See dimensions drawing	6±2	4.5	1	16	7.5
M3.5	3.7		6±2	4.5	1	18	7.5
M4	4.2		6±2	5	1	20	10
M5	5.2		6±2	5	1	20	10
M6	6.4		6±2	5.6	1.2	25	10.8



Coding: Eyelet size and wire length are specified by product code – RTS203C1R5M3L501

RTS	203	C1	R5	M3	L500	Example	Description	Standard Values	
						L500	Wire Length	L 500	50±5 mm
								L 151	150±5 mm
								L 201	200±5 mm
								L 501	500±5 mm
								L 102	1000±50 mm
								L 202	2000±50 mm
				M3			Eyelet Size	M3, M35, M4, M5, M6	
			R5				Tolerance	R1	1%
								R2	2%
								R5	5%
		C1					Beta Value	C1	3977K
								C4	3435K
								CG	4252K
	203						R25	502	5000Ω
								103	10000Ω
								203	20000Ω
								503	50000Ω
								104	100000Ω
RTS							Sensor Type		

RTS Series Ring Terminal Temperature Sensors

SI No	Exti Part Number	Resistance at 25°C	Resistance Tolerance	B Value (25/85° C)	Dissipation Factor	Maximum Power at 25°C	Eyelet Type
1	RTS502RXXMLXXX	5000.0Ω	±1.0%, ±2.0% & ±5.0%	3977K	1.5 mW/K	75 mW	M3/M3.5/M4/ M5/M6
2	RTS103RXXMLXXX	10000.0 Ω	±1.0%, ±2.0% & ±5.0%	3977K			
3	RTS103RXXMLXXX	10000.0 Ω	±1.0%, ±2.0% & ±5.0%	3435K			
4	RTS203RXXMLXXX	20000.0 Ω	±1.0%, ±2.0% & ±5.0%	3977K			
5	RTS203RXXMLXXX	20000.0 Ω	±1.0%, ±2.0% & ±5.0%	4252K			
6	RTS503RXXMLXXX	50000.0 Ω	±1.0%, ±2.0% & ±5.0%	3977K			
7	RTS503RXXMLXXX	50000.0 Ω	±1.0%, ±2.0% & ±5.0%	4252K			
8	RTS104RXXMLXXX	100000.0 Ω	±1.0%, ±2.0% & ±5.0%	3977K			
9	RTS104RXXMLXXX	100000.0 Ω	±1.0%, ±2.0% & ±5.0%	4252K			

Note:

- Alternate resistance value, B value, tolerance available on customer request.
- Alternate wire type and wire length available on customer request.
- Alternate eyelet sizes available on customer request.

